

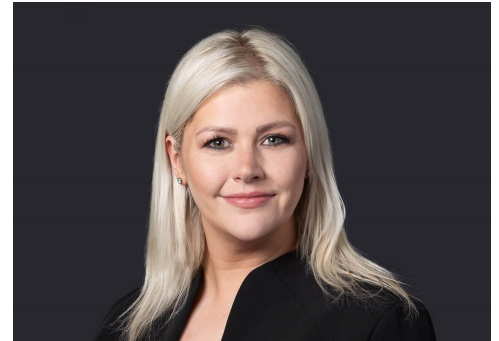
Louise Jeffers

Partner

 **Birmingham**

louise.jeffers@brownejacobson.com

+44 (0)121 237 3923



Louise Jeffers is the head of Adult Neurological Injuries in the Health and Advisory Litigation team. She is recognised as a 'Rising Star' in Legal 500. Louise specialises in defending spinal cord and brain injury claims on behalf of NHS health care providers, individual clinicians and insurers.

Louise specialises in spinal cord and brain injury claims. She has built strong relationships with an extensive network of leading neurosurgical and spinal orthopaedic clinicians and experts.

Louise has oversight of a substantial portfolio of neurosurgical and spinal orthopaedic claims providing a unique opportunity to undertake thematic reviews and identify learning opportunities for healthcare providers. Louise also presents on the issue of adult neurological injury claims and best practice.

Louise provides expert advice, resolves claims promptly (securing discontinuances wherever possible) and adopts an empathetic approach to clinicians and Claimants. Clients have described her as a "strong litigator" and remarked on her "excellent witness engagement". She has been praised by Claimant solicitors for her "empathetic approach" and the "pleasant and professional" way in which she conducts claims on behalf of Defendants. She is described in Legal 500 2022 as "a clinical negligence expert, she is thorough and an extremely safe pair of hands".

Related expertise

Clinical negligence

Integrated healthcare systems

Medical treatment in health

Professional indemnity

Safety and learning in healthcare

Testimonials

"You seem to have grasped the salient features of this complex case well ... and in only two weeks of work! Genuinely I am impressed."

David Ricketts, Expert