
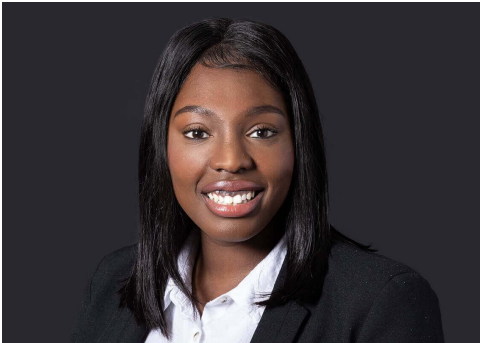


# Sherelle Appleby

Barrister (Associate)

 **Birmingham**  
**[Sherelle.Appleby@brownejacobson.com](mailto:Sherelle.Appleby@brownejacobson.com)**  
**+44 (0)330 045 2908**



Sherelle, a Barrister Associate in the Birmingham office and called to the Bar in 2019, represents several key clients of the firm in complex, multi-day cases. Her areas of focus include professional discipline proceedings, inquests, education tribunals, and various civil hearings.

Sherelle's pragmatic approach ensures she provides high-quality legal services in all areas of her work. Her inquest practice includes assisting NHS Trusts throughout England in complex multi-day hearings. These inquests include Article 2 and Judge-led inquests involving complex healthcare concerns, expert witnesses and prison deaths

In the Health, Education, and Social Care Chamber Tribunals, Sherelle advocates for local authorities and schools, effectively defending against SEND appeals and claims under the Disability Discrimination Act. Additionally, she provides representation for schools at Governing Body and Interim Review Panel meeting.

Prior to joining Browne Jacobson, Sherelle worked closely with vulnerable witnesses in the Family Law sector, specifically within the domestic violence department. She attended County and Magistrates' Courts across the South-Eastern Circuit, obtaining non-molestation orders on behalf of victims of domestic violence. This experience has equipped her with the skills to effectively support vulnerable witnesses in giving evidence.

A strong advocate for social mobility, Sherelle is an active member of our [Reach](#) community. She is passionate about increasing access to the Bar in England and Wales, having mentored many students from minority ethnic backgrounds through various organizations. Sherelle's article on her journey to the Bar can be found on [LawCareers.net](#).

---

## Expertise

### Services

Abuse and social care claims	Inquests	Special educational needs and disability matters
Barristers	Mental capacity and the Court of Protection	
Civil		

---

# Testimonials

## Clients

*"very prepared for the pre-inquest meeting with staff members which put witnesses at ease. Naturally supportive, compassionate and professional during the inquest itself- as well as prior and post the hearing itself on the day. The Trust could not have asked for a better service."*

**Client,**

*"The decision has pleasingly gone our way. A really brilliant decision and I am so pleased at the outcome in this case. Thanks for all your work in securing it."*

**Client,**

*"We have had a brilliant decision in on this one, given the witness position. Well done! I'm really pleased with this outcome and am sure the School will be too. Thanks so much for all your work on this case."*

**Client,**