

Browne Jacobson supports Prime on major agreement for 1600 space car park at Coventry hospital

Browne Jacobson has collaborated with leading healthcare property developer, Prime, to secure the funding of a new 1,600-space staff car park at University Hospital, Coventry which is being funded by the Universities Superannuation Scheme.

30 November 2020

Browne Jacobson has collaborated with leading healthcare property developer, Prime, to secure the funding of a new 1,600-space staff car park at University Hospital, Coventry which is being funded by the Universities Superannuation Scheme.

Victoria Thourgood, head of the health and social care real estate team at Browne Jacobson, provided legal advice to Prime.

The project, which is being delivered for University Hospitals Coventry and Warwickshire NHS Trust by Prime and construction company Montel Civil Engineering, received planning permission back in June and should be completed by summer 2021.

The 1600-space car park, located to the east of the hospital, will also include 34 active Electric Vehicle charging spaces and 46 passive charging spaces, 34 motorcycle parking spaces and 160 bicycle parking spaces. It will be accessed via the main hospital entrance off Clifford Bridge Road.

Phil Holland, Prime's Chief Investment Officer, said:

"This is a significant project for the Trust that will alleviate a lot of the logistical issues related to missed appointments and visits. Prime is delighted to be delivering this vital infrastructure for the Trust and local community in Coventry. It has been a pleasure working with Browne Jacobson who have demonstrated experience and commerciality, providing guidance in delivering legal documentation."

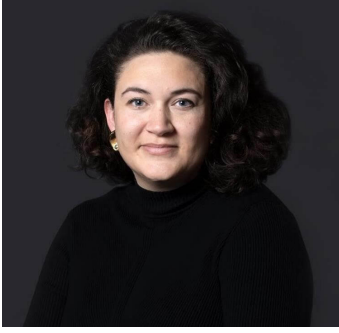
Victoria Thourgood, said:

"We have significant experience advising on major real estate developments and it was great to work with Prime, who are real experts in the sector and were recently awarded Property Developer of the Year in the 2020 Health Investor Awards.

"Currently demand for car parking spaces on the site outstrips supply. When complete the additional parking will enhance the overall user experience, significantly reducing congestion for staff, patients and visitors as well as emergency vehicles and public transport accessing the site. It is also expected to reduce disruption to residents living near to the hospital site."

"It is particularly pleasing to see the range of facilities being provided for lower carbon vehicles which is consistent with the NHS' drive towards "a greener NHS" intended to reduce the impact on the environment and public health."

Browne Jacobson's health and social care real estate team specialises in all types of property and development work, including major capital and transformation projects. Clients span the full spectrum of those operating in the health and social care arena, from private hospitals and clinics, NHS Trusts, Foundation Trusts and CCGs, to investors, care home operators, property developers, primary care providers, charities and those operating in the supported living, childrens services and learning and disability sectors.



Kara Shadbolt

Senior PR & Communication Manager

kara.shadbolt@brownejacobson.com

+44 (0)330 045 1111

Related expertise