

Browne Jacobson advises CET UK on Enverity acquisition

Browne Jacobson has advised CET UK on its acquisition of East Midlands based Enverity.

07 February 2019

Browne Jacobson has advised CET UK on its acquisition of East Midlands based Enverity.

Nottingham based [corporate finance](#) partner [Mark Hughes](#) led the Browne Jacobson advisory team. This is the second deal Mark has acted on for owners Palatine Private Equity having advised the private equity house on its majority stake in CET UK back in November 2018.

Enverity, which has sites in Newark and Daventry, provides specialist testing services for the civil engineering, structural engineering and geotechnical engineering markets, including primary and secondary aggregates, concrete, asphalt, pavement investigations, site remediation and construction materials.

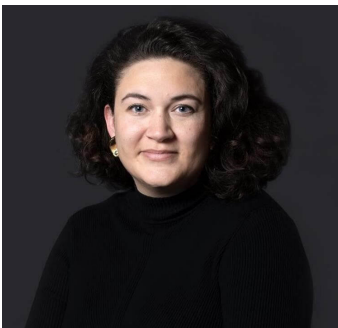
Founded in 1989, Castle Donington headquartered CET UK provides a range of specialist services, including claims management, draining services, testing and geotechnical services to the infrastructure, precision engineering, construction, property and insurance sectors. The company also has sites in Essex, Kent, Leicestershire and Scotland.

Peter Eglinton, CEO of CET, said: *"We're delighted to have the team at Enverity on-board and I have no doubt that their skills and knowledge will be a great asset to CET. We're looking forward to working with Enverity to broaden the services that we can offer our Construction industry clients, and in continuing to be able to expand our geographical reach."*

"The last few months have been a really exciting time for CET, and there's still more in store in 2019. We pride ourselves on our innovative use of technology and our quick and accurate services to clients. Enverity undoubtedly aligns with our vision at CET and I look forward to working with them moving forwards."

Mark Hughes, corporate finance partner, added: *"Having acted for Palatine on its majority stake in CET, we are delighted to have advised the business on this follow on acquisition. It will play a key part in helping CET deliver on its growth strategy and ambitions to remain a major UK materials testing powerhouse."*

Contact



Kara Shadbolt

Senior PR & Communication Manager

kara.shadbolt@brownejacobson.com

+44 (0)330 045 1111

Related expertise

Services

Commercial law

Construction and engineering services

Corporate