

Lifting the spirits in lockdown with binge-worthy LGBTQ+ TV

During lockdown many of the Browne Jacobson trainees have been finding solace in binge-worthy TV with inspirational LGBTQ+ characters and storylines.

18 February 2021

The first thing to state is that this blog post has absolutely nothing to do with being a trainee or indeed the law. However, as it is LGBTQ+ History Month and as we are still all going stir-crazy in lockdown, we wanted to introduce you to some enlightening and entertaining LGBTQ+ TV shows. During lockdown many of the Browne Jacobson trainees have been finding solace in binge-worthy TV with inspirational LGBTQ+ characters and storylines.

Over the course of the month, our internal LGBTQ+ network has been hosting a Friday afternoon tea and chat (LGBTa) in which anyone and everyone is welcome to attend. One of these sessions is focusing on the brilliant programme on Channel 4, *It's a Sin*, which examines a group of friends in the 1980s, in the shadow of the HIV AIDS epidemic. It is on this basis that we have left *It's a Sin* out of our list, although it is a must-watch!

1. The first on our list is the Netflix series *Schitt's Creek*. It takes a couple of episodes to get into it but after the first few, you will be hooked.

The record-breaking award-winning show was created by the Levy family and features the comic stylings of Caroline O'Hara and Annie Murphy. The plot centres around a very rich family who lose their wealth and have to rebuild their lives, living in a motel in a little town called *Schitt's Creek*.

In this world, David (the son), is a bisexual who has relationships with both men and women and, crucially, absolutely no one bats an eyelid. In one scene, David explains his sexuality to a friend with the now classic metaphor, "I'm into the wine, not the label." The show is an aspirational representation about what life could be: they have created a world where discrimination and prejudice simply do not exist. It is an absolute joy. There are 6 series of 25-minute shows to binge.

2. The second on our list is Channel 4's *Feel Good*. The semi-autobiographical show was created by comedian Mae Martin and features the legendary Lisa Kudrow as Mae's slightly eccentric mother.

The plot explores the relationship between Mae, a comedian who is dealing with the long-term recovery from addiction and George, a "straight" woman who struggles to come to terms with her relationship and is scared to come out to her loved ones. There are poignant moments which catch your heartstrings, interspersed in the hilarity of their antics.

The show really highlights the importance of subtle discriminatory language and how this serves to isolate individuals. One particularly moving scene summarises this when George is trying to hide her relationship from her friends, and Mae simply states, "If you want me to feel confident, then hold my hand."

So far, there are only 6 episodes. However, we are eagerly awaiting series 2!

3. The third on our list is the Netflix hit *Grace and Frankie*. This masterpiece of feel-good TV boasts an all-star cast including Jane Fonda,

Lily Tomlin, Martin Sheen and Sam Waterhouse.

Imagine you are a 70-something year old woman whose husband of 40 years has just come out as gay and left you for his former law firm partner. What would you do? Move in with the wife of said partner (whom you despise) and rebuild your lives together.

Once the initial heartbreak passes, this show demonstrates that in the aftermath of honesty, life goes on. The characters go through a rollercoaster of often hilarious, and sometimes tear-jerking emotions and changes, but eventually each find happiness in the lives that they create.

There are 6 series to binge and an ensemble cast to root for.

4. The last show on our list is BBC's worldwide hit Killing Eve.

The show stars Sandra Oh, Jodie Comer and Fiona Shaw. The writing team includes Phoebe Waller-Bridge. Need we say more?

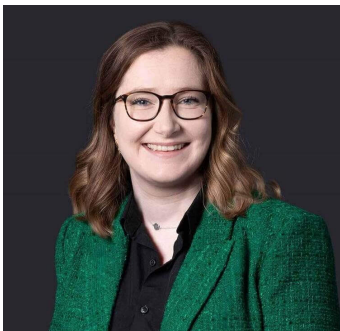
Essentially, a government agent (Oh) identifies the patterns of a new assassin (Comer) and recognises that this assassin is likely to be a woman. With this discovery, she is recruited by the Head of the Russia Desk at MI6 (Shaw) to track the assassin. This task drives both the agent and the assassin to the far corners of the earth and spirals into a mutual obsession.

With the assistance of an incredible wardrobe department, the show demonstrates that regardless of what we call "it", we can barely control who we are drawn to.

So far there are 3 series of this award-winning show to binge.

Happy bingeing!

Contact



Ruby O'Hara

Associate

ruby.o'hara@brownejacobson.com

+44 (0)330 045 2934

Related expertise